

Quantum BORON ACTIVE

FOR THE PREVENTION AND CORRECTION OF NUTRIENT DEFICIENCY

GUARANTEED ANALYSIS:

Total Nitrogen (N)	4,1%
Boron (B)	10,4%
Coper (Cu)	0,0037%
Molybdenum (Mo)	0,015%

Derived from: boron ethanolamine, copper sulphate, ammonium molybdate.

ALSO CONTAINS NON-PLANT FOOD INGREDIENTS:

Amino acids, polyol complexes.

Statement of Purpose: These components are intended to improve the availability of boron.

Quantum BORON ACTIVE Advantages

Quantum BORON ACTIVE is designed for application to all field, row, vegetable, fruit, tree and vine crops, and ornamentals for the prevention and correction of boron deficiencies when used as part of a balanced fertility program.

APT technology (Active Phloem Transport technology) significantly improves the absorption and movement of nutrients from the leaf cuticle to plant growth points, allowing plants to access nutrients for longer periods of time.

- ◆ Effectively delivers Boron, which is critical to nitrogen metabolism and root nodule formation; as well as increased flowering and fruiting; carbohydrate metabolism; and protein synthesis.
- ◆ Supplies Molybdenum and Coper, which enhances plant nitrogen utilization
- ◆ Nutrients are quickly metabolized and utilized by the plant.
- ◆ Compatible with most pesticides.

 **NET CONTENTS:**
2.5 gallons (9.46 liters)

 **NET WEIGHT:**
28.0 lbs / 12.7 kgs

 **DENSITY/ WEIGHT PER GALLON:**
11.2 Lbs (5.08 kg) at 68°F (20° C)

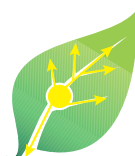
 **DO NOT STORE BELOW**
40°F (5°C)



APT technology. Active Phloem Transport is the technology for increasing the phloem mobility of nutrients. All this provides rapid movement of elements from the application area up to young plant tissues.

Most trace elements and Calcium are not mobile in the phloem, that is, they have a low ability to move from one part of the plant to another. A special complex of APT technology polyols ensures the formation of compounds in the plant with high transport capacity. Low-molecular transport forms of elements contribute to a better penetration of compounds into the leaf and unimpeded movement of elements with low mobility through the plant vascular system.

APT technology



High mobility

Common Boron solution



Limited mobility

RATE RECOMMENDATIONS

Soil applications: Quantum BORON ACTIVE may be applied as a broadcast soil application to crops at rates ranging from 1 to 8 pints per acre. Do not apply in-furrow near the seed.

Aerial: 1-2 pints/acre in minimum 5 gallons of water

Foliar Application: Quantum BORON ACTIVE may be applied as a foliar application to crops at rates ranging from 1 to 4 pints per acre.

CROPS	FOLIAR APPLICATION RATES
Alfalfa	0.75 to 1.5 pt/acre after each cutting. Applications should be made when sufficient re-growth has occurred.
Soybeans	0.75 to 1.5 pt/acre when soybeans are in the vegetative stage or earlier reproductive stage. Later application may be needed, tissue samples should be used to determine later usages.
Cereal Crops	0.75 to 1.5 pt/acre from tillering to pollination.
Canola	0.75 pt/acre between bolting and first bloom. Apply 0.75 to 1.5 pt/acre during bloom to pod set as needed. Later application may be needed, tissue samples should be used to determine later usages.
Sugar Beets	0.75 to 1.5 pt/acre between the second and 10 true leaf stages. Later application may be needed, tissue samples should be used to determine later usages
Corn	0.75 to 1.5 pt/acre when corn is in the V5 to V9 stage or from VT to R3 (R1 recommended). Tissue samples should be used to determine later usages.
Cotton	0.75 pt/acre between pin head square and first bloom. Apply 0.75 to 1.5 pt/acre from first bloom to boll fill as needed. Later application may be needed, tissue samples should be used to determine later usages.
Potatoes	0.75 to 1.5 pt/acre from emergence to tuber initiation. Later application may be needed, tissue samples should be used to determine later usages.
Sunflowers	0.75 to 1.5 pt/acre between the second and 10 true leaf stages and again prior to bloom. Later applications may be needed, tissue samples should be used to determine later usages.
Vegetable crops	Apply 12 to 16 ounces per acre starting at pre-bloom or early bloom. Repeat applications may be needed every 10 to 14 days or as tissue samples deem necessary.
Turfgrass	Apply 0.25 to 2 fl. oz. per 1000 ft ² in 1 to 3 gallons of water during the growing season as needed.
Nut and Fruit Crops	Apply 10 to 12 ounces per acre as recommended by crop advisor. Can be applied in 50 to 200 gallons per acre.

Quantum BORON ACTIVE is compatible with most agricultural chemicals and nutrients. Can be used in conjunction with glyphosate products. However, if the desired combination has not been previously used, a compatibility test is recommended (jar test).

Distributed and guaranteed by
Quantum Fertilizers, LLC
 2501 Chatham Rd. #4041,
 Springfield, IL 62704
 e-mail: office@quantum-fertilizers.com
 quantum-fertilizers.com



Management System
 ISO 9001:2015

www.tuv.com
 ID 9000010839

